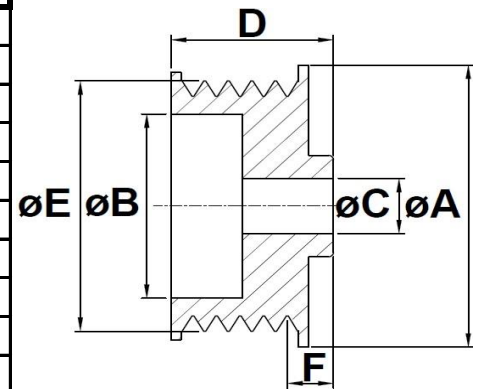


## MEDIDAS DE POLEAS MULTIVIAS

Código	Ø A	Ø B	Ø C	D	E	Vias	Chavetero	Obs.
M0100	72,5	49,0	17,0	31,5	66,5	7	-	Prof. 10,5
M0100R	72,5	49,0	17,0	31,5	66,5	7	-	Prof. 14,5
M0101	64,0	42,0	17,0	42,5	59,0	5	-	
M0102	66,0	45,0	17,0	34,0	60,0	5	-	
M0103	63,5	37,0	17,0	39,5	58,0	8	4,0	
M0104	68,0	46,0	17,0	30,0	62,0	6	-	
M0105	84,0	60,0	22,2	38,5	78,0	8	5,0	
M0106	66,0	45,0	17,0	29,5	59,5	6	-	
M0107	67,0	45,0	17,0	29,5	62,8	6	-	
M0108	65,0	44,0	17,0	26,5	59,5	5	-	
M0109	57,0	39,0	17,0	25,5	54,5	6	-	
M0110	70,0	48,0	17,0	21,0	64,5	4	-	
M0111	61,0	42,0	17,0	37,5	56,0	6	-	
M0112	55,0	33,5	17,0	44,5	50,0	6	-	
M0113	64,5	42,0	17,0	35,0	57,5	6	-	
M0114	61,0	40,0	17,0	35,0	55,0	6	-	
M0115	60,0	39,0	17,0	28,5	55,0	3	-	
M0116	65,0	44,0	17,0	35,0	60,0	8	-	
M0117	66,5	51,5	17,0	29,0	66,5	7	-	
M0118	72,0	38,5	17,0	44,0	66,7	8	-	
M0119	55,0	36,0	17,0	27,5	49,0	6	-	
M0120	55,0	36,0	17,0	41,0	49,0	6	-	
M0121	62,5	45,0	17,0	26,8	57,0	6	-	
M0122	60,0	41,0	17,0	39,0	54,5	6	-	
M0123	58,5	41,0	17,0	26,0	56,0	6	-	
M0124	57,0	40,0	17,0	25,5	54,5	6	-	
M0125R	58,5-76,0	42,0	17,0	40,0	55,0	6	-	2 Ø exterior
M0126	83,5	65,0	17,0	37,0	76,8	9	-	
M0127	92,0	63,0	30,0	35,5	86,5	8	8,0	
M0128	63,5	45,0	17,0	41,3	57,5	8	-	
M0129	72,0	50,0	17,0	34,0	70,0	8	-	
M0130	79,0	58,0	17,0	37,5	70,0	8	-	
M0131	80,0-84,0	60,0	17,0	42,0	77,0	9	-	2 Ø exterior
M0132R	58,5-76,0	42,0	17,0	40,0	55,0	5	-	2 Ø exterior
M0133	48,8	36,0	17,0	31,0	48,8	6	-	
M0134	91,0	66,5	30,0	35,5	86,5	8	8,0	
M0135	68,0	43,0	17,0	38,8	61,5	5	-	
M0136	55,0	35,0	17,0	43,3	50,0	6	-	
M0137	85,3	51,0	17,0	36,5	80,5	8	-	
M0138	66,0	45,0	17,0	39,0	59,5	4	-	
M0139	96,5	76,0	30,0	40,0	89,5	9	-	
M0140	59,7	41,0	17,0	42,0	55,0	6	-	
M0141	74,5	47,0	17,0	42,0	68,0	6	-	
M0142	55,2	34,8	17,0	36,7	50,0	8	-	
M0143	55,0	35,7	17,0	35,6	50,0	5	-	
M0144	58,5	36,0	17,0	26,3	52,5	6	-	
M0145	55,0	36,0	17,0	28,3	49,5	6	-	
M0146	59,0	40,0	17,0	24,3	54,0	4	-	



# MEDIDAS DE POLEAS MULTIVIAS

Código	Ø A	Ø B	Ø C	D	E	Vias	Chavetero	Obs.
M0147	61,5	41,0	17,0	38,0	55,0	7	-	
M0148	59,0	36,3	17,0	24,0	54,0	5	-	
M0149	59,0	40,0	17,0	27,6	55,7	6	-	
M0150	60,0	40,0	17,0	22,8	53,5	5	-	
M0151	59,0	36,0	17,0	25,3	54,4	5	-	
M0152	53,0	36,0	17,0	30,3	49,0	6	-	
M0153	73,0	54,1	17,0	47,6	69,0	12	-	
M0154	59,8	46,0	17,0	28,5	59,8	3	-	
M0155	55,0	36,0	17,0	31,0	49,0	6	-	
M1056	60,0	41,0	17,0	33,7	55,0	6	-	
M1057	58.2/60.1	36,9	17,0	39,0	53,6	5	-	
M0158	60,0	40,0	17,0	25,8	54,6	6	-	
M1059	63,0	42,0	17,0	42,2	59,0	5	4	
M0160	54,0	36,0	17,0	30,0	49,0	6	-	
M0161	76.0/78.0	55,8	17,0	29,2	72,0	6	-	
M0162	61,0	41,0	17,0	34,4	55,0	7	-	
M0163	60,0	41,0	17,0	35,2	53,4	6	-	
M0164	60,0	41,0	17,0	42,6	54,8	6	-	
M0165	54,2	41,0	17,0	31,6	54,2	6	-	

